

LANCOM SFP Modules

Flexible connections for your switches, routers and firewalls!



LANCOM switches, routers and firewalls with integrated SFP ports are characterized by maximum versatility in use. Be it for high-speed fiber-optic networking or as a copper-cabled Ethernet port: LANCOM SFP modules provide the specialized connections you need for your LANCOM device. And thanks to the tried-and-tested compatibility with LANCOM products, LANCOM SFP modules offer the best connections and highest reliability.

- [LANCOM SFP-SX-LC1](#)
- [LANCOM SFP-SX2-LC1](#)
- [LANCOM SFP-LX-LC1](#)
- [LANCOM SFP-SX-LC10](#)
- [LANCOM SFP-LX-LC10](#)
- [LANCOM SFP-LR40-LC10](#)
- [LANCOM SFP-SR-LC25](#)
- [LANCOM SFP-LR-LC25](#)
- [LANCOM SFP-SR-MPO40](#)
- [LANCOM SFP-LR-LC40](#)
- [LANCOM SFP-CO1](#)
- [LANCOM SFP-CO10-MG](#)
- [LANCOM SFP-GPON-1](#)
- [LANCOM SFP-AON-1](#)
- [LANCOM SFP-BiDi1550-SC1](#)
- [LANCOM SFP-BiDi1310-LC10](#)

LANCOM SFP Modules

LANCOM SFP-SX-LC1

1 Gbps fiber-optic networking of components over distances of up to 550 m



- 1000BASE-SX standard (SFP)
- Up to 1 Gbps link speed
- Full-duplex mode
- Supports 50/125 μm (550 m cable length) and 62.5/125 μm (300 m cable length) multi mode fiber
- Wavelength 850nm
- Output power typ. / max. -6 / -3 dBm
- Receiver sensitivity min. -17 dBm
- Receiver overdrive max. -3 dBm
- Operating temperature 0–70 °C
- LC connector
- Support for digital diagnostic monitoring (DDM)*

* This function is only available for SFP modules of the latest generation (optically identifiable by the LANCOM logo) and not in connection with LANCOM R&S®Unified Firewalls.

LANCOM SFP Modules

LANCOM SFP-SX2-LC1

1 Gbps fiber-optic networking of components over distances of up to 2 km



- 1000BASE-SX-standard (SFP)
- Up to 1 Gbps link speed
- Full-duplex mode
- Supports 50/125 μm (2 km cable length) multi mode fiber
- Wavelength 1310 nm
- Output power typ. / max. -6 / -3 dBm
- Receiver sensitivity min. -21 dBm
- Receiver overdrive max. -3 dBm
- Operating temperature 0–70 °C
- LC connector
- Support for digital diagnostic monitoring (DDM)*

* This function is only available for SFP modules of the latest generation (optically identifiable by the LANCOM logo) and not in connection with LANCOM R&S®Unified Firewalls.

LANCOM SFP Modules

LANCOM SFP-LX-LC1

1 Gbps fiber-optic networking of components over distances of up to 10 km



- 1000BASE-LX standard (SFP)
- Up to 1 Gbps link speed
- Full duplex mode
- Supports 9/125 μm (10 km cable length) single mode fiber
- Wavelength 1310nm
- Output power typ. / max. -6 / -3 dBm
- Receiver sensitivity min. -24 dBm
- Receiver overdrive max. -3 dBm
- LC connector
- Operating temperature 0–70 °C
- Support for digital diagnostic monitoring (DDM)*

* This function is only available for SFP modules of the latest generation (optically identifiable by the LANCOM logo) and not in connection with LANCOM R&S®Unified Firewalls.

LANCOM SFP Modules

LANCOM SFP-SX-LC10

10 Gbps fiber-optic networking of components over distances of up to 300 m



- 10GBASE-SR/SW standard (SFP+)
- Up to 10 Gbps link speed
- Full-duplex mode
- Supports 50/125 μm (300 m cable length) multi mode fiber
- Wavelength 850nm
- Output power typ. / max. -4 / -1 dBm
- Receiver sensitivity min. -11 dBm
- Receiver overdrive max. -1 dBm
- LC connector
- Operating temperature 0–70 °C
- Support of digital diagnostic monitoring (DDM)*

* This function is only available for SFP modules of the latest generation (optically identifiable by the LANCOM logo) and not in connection with LANCOM R&S®Unified Firewalls.

LANCOM SFP Modules

LANCOM SFP-LX-LC10

10 Gbps fiber-optic networking of components over distances of up to 10 km



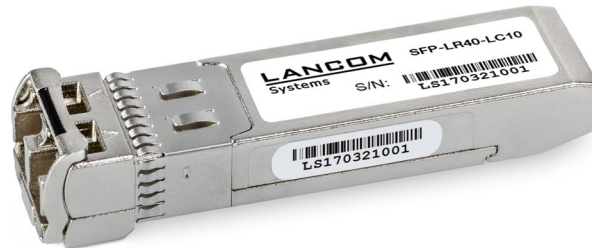
- 10GBASE-LR/LW standard (SFP+)
- Up to 10 Gbps link speed
- Full duplex mode
- Supports 9/125 μ m (10 km cable length) single mode fiber
- Wavelength 1310nm
- Output power typ. / max. -3 / 0 dBm
- Receiver sensitivity min. -14 dBm
- Receiver overdrive max. -1 dBm
- Low power dissipation (1.05 W typ.)
- Operating temperature 0–70 °C
- LC connector
- Support for digital diagnostic monitoring (DDM)*

* This function is only available for SFP modules of the latest generation (optically identifiable by the LANCOM logo) and not in connection with LANCOM R&S®Unified Firewalls.

LANCOM SFP Modules

LANCOM SFP-LR40-LC10

10GBase ER 40 km SFP module for SFP+ ports on LANCOM products



- 10GBase ER standard (SFP+)
- Up to 10 Gbps link speed
- Full duplex mode
- Support 9/125 μm (40 km cable length) single mode fiber
- Wavelength 1550 nm, EML transmitter
- Output power typ. / max. -1 / 3 dBm
- Receiver sensitivity min. -15 dBm
- Receiver overdrive max. -1 dBm
- Power consumption typ. 1,50 W
- LC connector
- Support for Digital Diagnostic Monitoring (DDM)*

* This function is only available for SFP modules of the latest generation (optically identifiable by the LANCOM logo) and not in connection with LANCOM R&S®Unified Firewalls.

LANCOM SFP Modules

LANCOM SFP-SR-LC25

25 Gbps fiber-optic networking of components over distances of up to 300 m



- 25GBASE-SR/SW SFP module (SFP28)
- Up to 25 Gbps Gigabit link speed
- Connection to SFP28 ports
- Multi mode fiber (MMF)
- Wavelength 850 nm
- Output power typ. / max. -4 / 2 dBm
- Receiver sensitivity min. -10 dBm
- Receiver overdrive max. 3 dBm
- Supports 50 μ m and 125 μ m multi mode fiber (max. distance 300 m)
- LC connector
- Swappable during system operation

LANCOM SFP Modules

LANCOM SFP-LR-LC25

25 Gbps fiber-optic networking of components over distances of up to 10 km



- 25GBASE-LR/LW SFP module (SFP28)
- Up to 25 Gbps Gigabit link speed
- Single mode fiber (SMF)
- Connection to SFP28 ports
- Supports 9 μm single mode fiber (max. distance 10 km)
- Wavelength 1310 nm
- Output power typ. / max. -2 / 3 dBm
- Receiver sensitivity min. -12 dBm
- Receiver overdrive max. 3 dBm
- LC connector
- Swappable during system operation

LANCOM SFP Modules

LANCOM SFP-SR-MPO40

40 Gbps fiber-optic networking of components over distances of up to 300 m

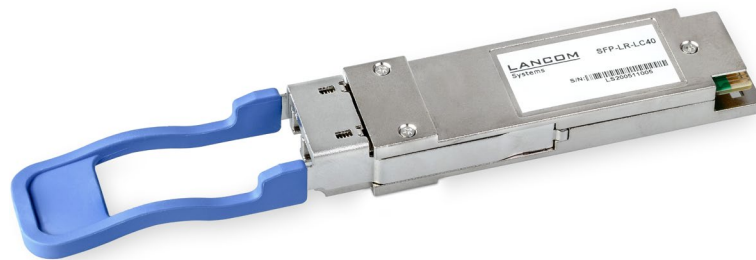


- 40GBASE-SR/SW SFP module (QSFP+)
- Up to 40 Gbps Gigabit link speed
- Multi mode fiber (MMF)
- Supports 50/125 μ m multi mode fiber (max. distance 300 m)
- Wavelength 850 nm
- Output power typ. / max. -4 / 3 dBm
- Receiver sensitivity min. -10 dBm
- Receiver overdrive max. 3 dBm
- The module is equipped with an MPO Male connector
- To connect two transceivers a female-female pigtail with polarity B is required (not included)
- Swappable during system operation

LANCOM SFP Modules

LANCOM SFP-LR-LC40

40 Gbps fiber-optic networking of components over distances of up to 10 km



- 40GBASE-LR/LW-SFP module (QSFP+)
- Up to 40 Gbps Gigabit link speed
- Single mode fiber (SMF)
- Connection to QSFP+ ports
- Supports 9 μ m single mode fiber (max. distance 10 km)
- Wavelength 1310 nm
- Output power typ. / max. -4 / 2 dBm
- Receiver sensitivity min. -11 dBm
- Receiver overdrive max. 3 dBm
- LC connector
- Swappable during system operation

LANCOM SFP Modules

LANCOM SFP-CO1

1 Gbps copper module for operating an SFP port on copper lines



- RJ45 Ethernet transceiver 1000BASE-T
- Up to 1 Gbps link speed
- Full-duplex mode
- Operating temperature 0–70 °C

LANCOM SFP-CO10-MG

10 Gbps copper module for operating an SFP port on copper lines



- Multi-Gigabit Ethernet copper SFP module
- Up to 10 Gbps Gigabit link speed
- Cable length up to 30m when using CAT6A cables (shorter link lengths can be expected when using lower category cables)
- Multi-Gigabit Ethernet capable
- Swappable during system operation

LANCOM SFP Modules

LANCOM SFP-GPON-1

GPON SFP module for connection to passive fiber optic lines (FTTH)



- GPON G.984.2 ONT
- Simplex SC/APC transceiver
- Class B+, 28dB link budget
- Supports 9/125 μ m single mode fiber
- TX wavelength typ. 1310 nm
- RX wavelength min. / max. 1480 nm / 1500 nm
- Operating temperature -40 to 85°C
- Support for Digital Diagnostic Monitoring (DDM)
- Including 3 m LC/APC to SC/APC connection cable

LANCOM SFP Modules

LANCOM SFP-AON-1

AON SFP module for connection to active fiber optic lines (FTTH)



- 1000BASE-BX20-U SFP
- Simplex SC/UPC transceiver
- Up to 1 Gbps link speed
- Full duplex operation
- Supports 9/125 µm (20 km cable length) single mode fiber
- TX wavelength typ. 1310 nm
- RX wavelength min. / max. 1480 nm / 1580 nm
- Output power typ. / max. -9 / -3 dBm
- Receiver sensitivity min. -24 dBm
- Receiver overdrive max. -3 dBm
- Operating temperature -40 to 85 °C
- Support for Digital Diagnostic Monitoring (DDM)
- Including 3 m LC/APC to SC/UPC connection cable

LANCOM SFP Modules

LANCOM SFP-BiDi1550-SC1

1G bidirectional SFP transceiver pair for fiber-optic networking of LANCOM products

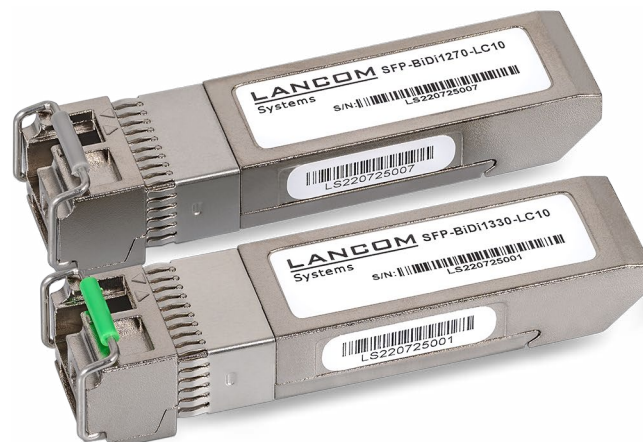


- Transmitting and receiving via only one optical fiber with two separate wavelengths (1310 nm / 1550 nm)
- SC/UPC connector
- Up to 1 Gbps link speed
- Full duplex operation
- Supports 9/125 μm (20 km cable length) single mode fiber
- TX wavelength 1310 nm or 1550 nm (A or B type)
- RX wavelength 1310 nm or 1550 nm (A or B type)
- Receiver sensitivity min. -24 dBm
- Receiver overload max. -3 dBm
- Operating temperature -20 to 85 °C
- Support for Digital Diagnostic Monitoring (DDM)
- Swappable during system operation (hot-pluggable)

LANCOM SFP Modules

LANCOM SFP-BiDi1310-LC10

10G bidirectional SFP+ transceiver pair for fiber-optic networking between LANCOM switches



- Transmitting and receiving via only one optical fiber with two separate wavelengths (1270 nm / 1330 nm)
- LC/PC connector
- Up to 10 Gbps link speed
- Full duplex operation
- Supports 9/125 μm (20 km cable length) single mode fiber
- TX wavelength 1270 nm or 1330 nm (A or B type)
- RX wavelength 1270 nm or 1330 nm (A or B type)
- Receiver sensitivity min. -14 dBm
- Receiver overload max. 0 dBm
- Operating temperature -20 to 85 $^{\circ}\text{C}$
- Support for Digital Diagnostic Monitoring (DDM)
- Swappable during system operation (hot-pluggable)

LANCOM SFP Modules

	LANCOM SFP-SX-LC1	LANCOM SFP-SX2-LC1	LANCOM SFP-LX-LC1	LANCOM SFP-SX-LC10	LANCOM SFP-LX-LC10	LANCOM SFP-LR40-LC10
Item number	61556 60184 (Bulk 10)	60183	61557 60185 (Bulk 10)	61485 60187 (Bulk 10)	61497 60188 (Bulk 10)	60182 60198 (Bulk 10)
Warranty	2 years	2 years	2 years	2 years	2 years	2 years

	LANCOM SFP-SR-LC25	LANCOM SFP-LR-LC25	LANCOM SFP-SR-MPO40	LANCOM SFP-LR-LC40	LANCOM SFP-CO1	LANCOM SFP-CO10-MG
Item number	60171 60190 (Bulk 10)	60172 60191 (Bulk 10)	60173 60193 (Bulk 10)	60174 60192 (Bulk 10)	61494 60186 (Bulk 10)	60170 60189 (Bulk 10)
Warranty	2 years	2 years	2 years	2 years	2 years	2 years

	LANCOM SFP-GPON-1	LANCOM SFP-AON-1	LANCOM SFP-BiDi1550-SC1	LANCOM SFP-BiDi1310-LC10
Item number	60199	60200	60201	60202
Warranty	2 years	2 years	2 years	2 years

LANCOM devices and other LANCOM accessories compatible to the LANCOM SFP modules can be found under <https://www.lancom-systems.com/products/software-accessories/accessories/lancom-sfp-modules>