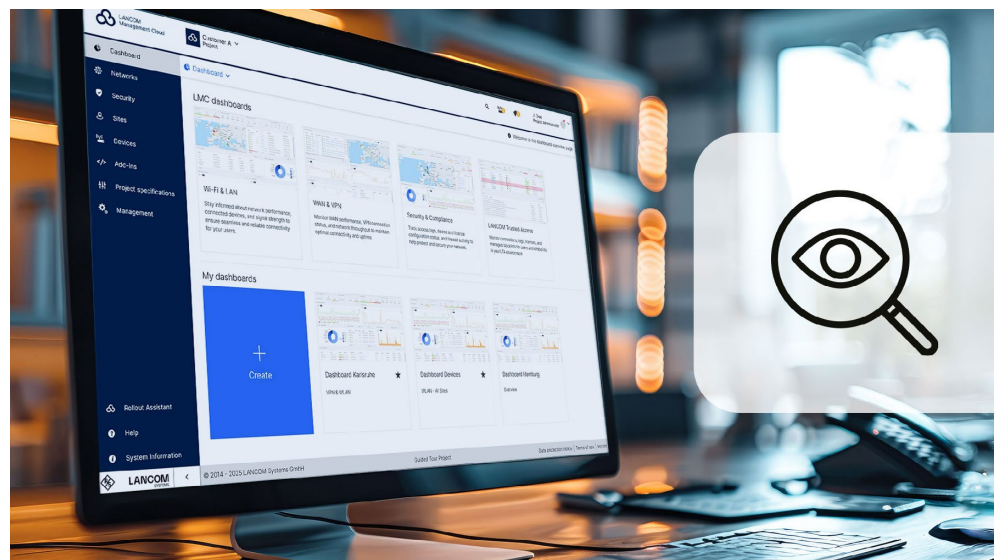


“LMC dashboards” and “My dashboards”

Features for comprehensive monitoring

In large infrastructures in particular, it is crucial to keep track of network events transparently, identify errors quickly, and carry out detailed analyses. The dashboards in your LMC support you with clear, transparent monitoring that is individually tailored to your requirements.

Benefit from the comprehensive functions of the predefined, topic-specific “LMC dashboards” — **Wi-Fi & LAN**, **WAN & VPN**, **Security & Compliance**, and **LANCOM Trusted Access** – or use “My dashboards” to design your own personalized overview and focus specifically on the monitoring parameters that matter most to you.



All dashboards at a glance

You can get a clearly structured overview on the overview page, where both the “LMC dashboards” and your individual dashboards (“My dashboards”) are displayed centrally.

This page can be accessed directly via the left-hand menu under “Dashboard” or by selecting “More dashboards” in the quick links menu. From here, you can:

- create new personalized dashboards,
- edit existing dashboards,
- mark important dashboards as favorites and customize the order in which they appear,
- or open any dashboard directly with just one click.

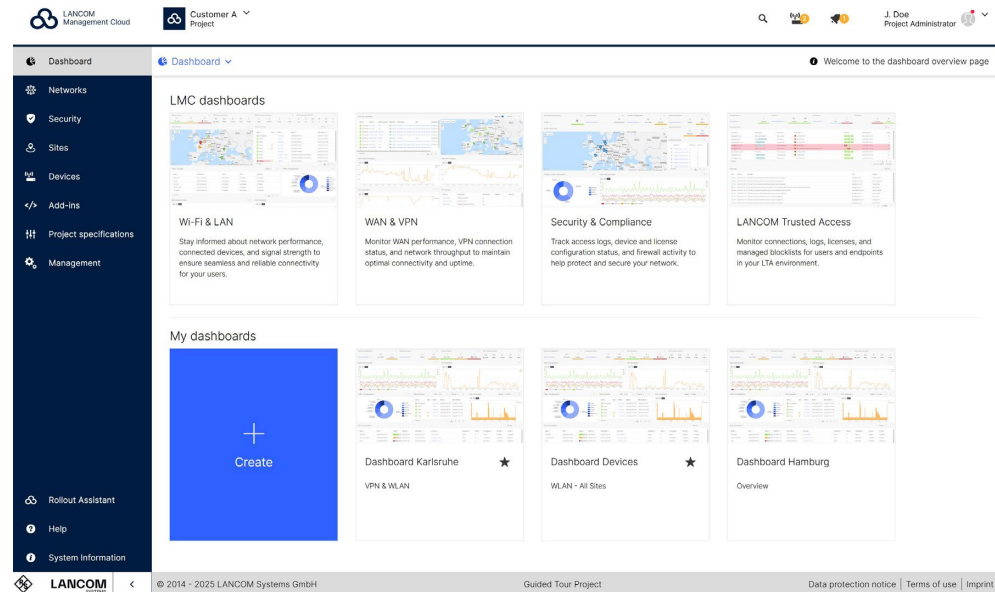


Figure 1:
Dashboards overview page

Function overview

The classic, area-specific “LMC dashboards” and “My dashboards” provide you with a consistent set of tools for efficient monitoring:

Simplified filtering

- **Global filters:** Apply filters to the entire dashboard.
- **Location and device filter:** Isolate individual locations or devices for a focused analysis.
- **Time filter with monthly view:** Thanks to an extended time frame, you can analyze trends over longer periods of time.
- **Select time range:** Choose custom time intervals for your monitoring.

Customizable monitoring

- **Flexible widget management:** Add widgets and customize metrics, visualization types, filters, size, and position.
- **Dashboard reset:** If required, you can quickly restore the default settings of your dashboard.

Advanced data analysis

- **Synchronized chart tooltips:** Compare values across all charts by hovering your mouse over them.
- **Selectable data value display:** Easily analyze metric information by selecting minimum, average, and maximum.

Improved visualization and navigation

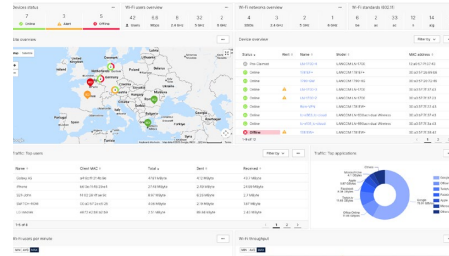
- **Alternative chart types:** Choose the best visualization type for your data, e.g. bar charts.
- **Dynamic resizing of charts & updated donut charts:** Optimize your layout for an improved overview.

Structured workflow

- **1-click navigation:** Switch effortlessly between different aggregation levels.
- **Quick links:** Switch easily between the general "LMC dashboards" and "My dashboards".
- **Auto-refresh button:** Pause the incoming data flow to remain undisturbed during analysis work.
- **Widget-specific filters:** Override global dashboard filters to focus on a specific device or location.

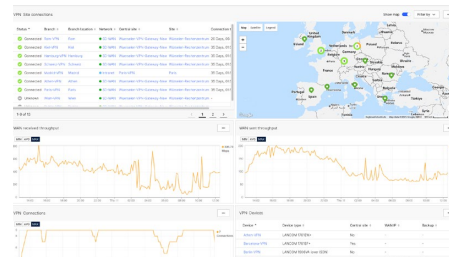
“LMC dashboards” – overview

The “LMC dashboards” serve as templates that can be customized. They provide you with a quick introduction to and overview of the selected topics.



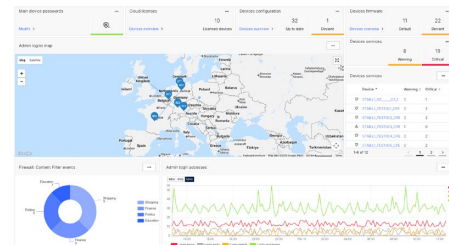
Wi-Fi & LAN

Stay informed about network performance, connected devices, and signal strength to ensure seamless and reliable connectivity for your users.



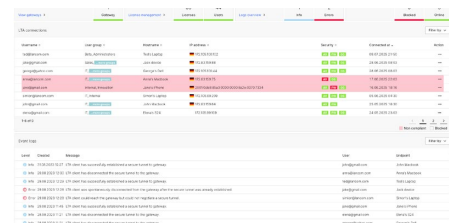
WAN & VPN

Monitor WAN performance, VPN connection status, and network throughput to maintain optimal connectivity and uptime.



Security & Compliance

Track access logs, device and license configuration status, and firewall activity to help protect and secure your network.



LANCOM Trusted Access

Monitor connections, logs, licenses, and managed blocklists for users and endpoints in your LTA.

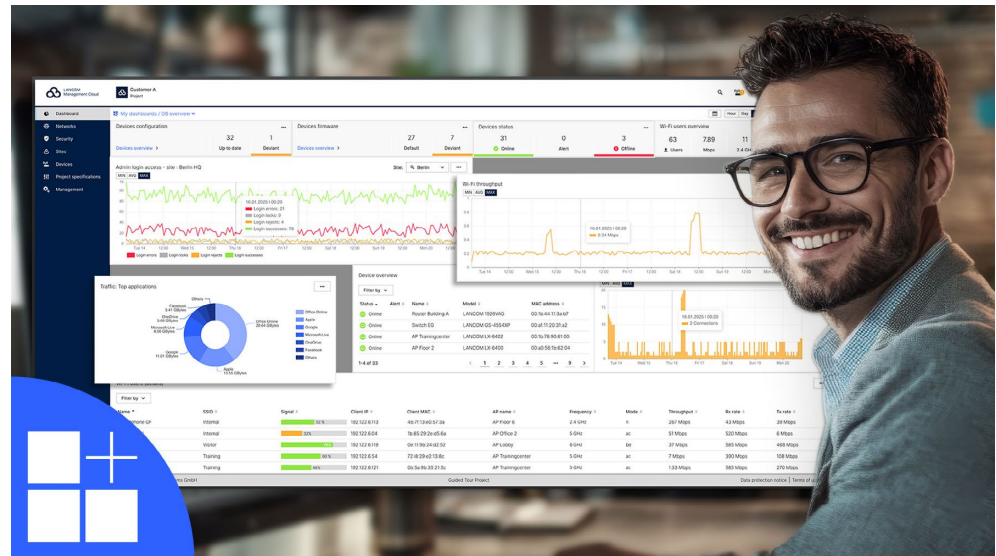
Figure 2:
View examples of
“LMC dashboards”



Unlike “My dashboards”, “LMC dashboards” cannot be deleted. However, you can add, remove, or rearrange widgets within the dashboard at any time. If needed, you can restore the dashboard to its original settings by clicking „Reset“.

"My dashboards" – overview

"My dashboards" give you full control with advanced options for metrics and filters. Here, you can tailor your monitoring to your needs and create fully personalized dashboards.



- **Up to 11 user-defined dashboards per project**
Customize the monitoring to your specific needs and workflows.
- **Fully customizable design**
Configure the design, layout, widgets, and filters according to your wishes.
- **Optimized workflow thanks to filter system**
Using the filter system, you define whether widgets follow the global dashboard filters or are fixed to a specific device or location. These settings can be adjusted during creation or later via the widget's three-dot menu.
- **Isolated sandbox environment**
"My dashboards" are only visible to you. Take advantage of the opportunity to try out new configurations without affecting your colleagues' workflows.

How to get started with "My dashboards"

With these simple steps, you can create your own individual monitoring environment.

1. Navigation

- Select the "Dashboards" area in the menu on the left-hand side.
- Alternatively, you can access "My dashboards" via the quick link drop-down menu at the top left.

2. Create your first personalized dashboard

→ Click on "Create".

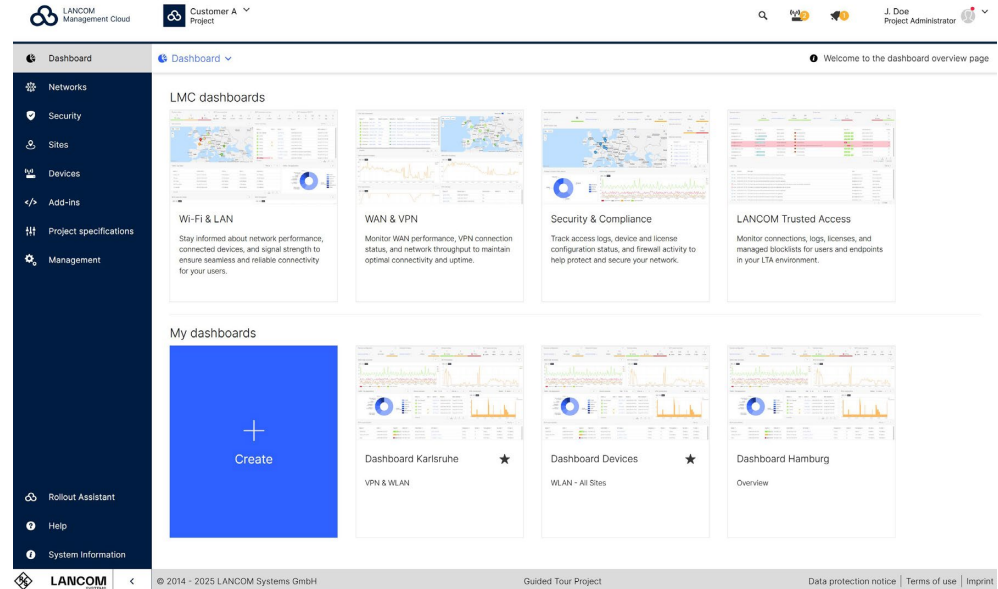


Figure 3:
Creating a new dashboard

- Give the dashboard a suitable name and specify which filters should be applied to it:
- None (default setting): The dashboard shows all available data.
 - Site or device filter: Select a specific location or a specific device (in this case, another context menu appears that allows you to select a specific filter, optional)

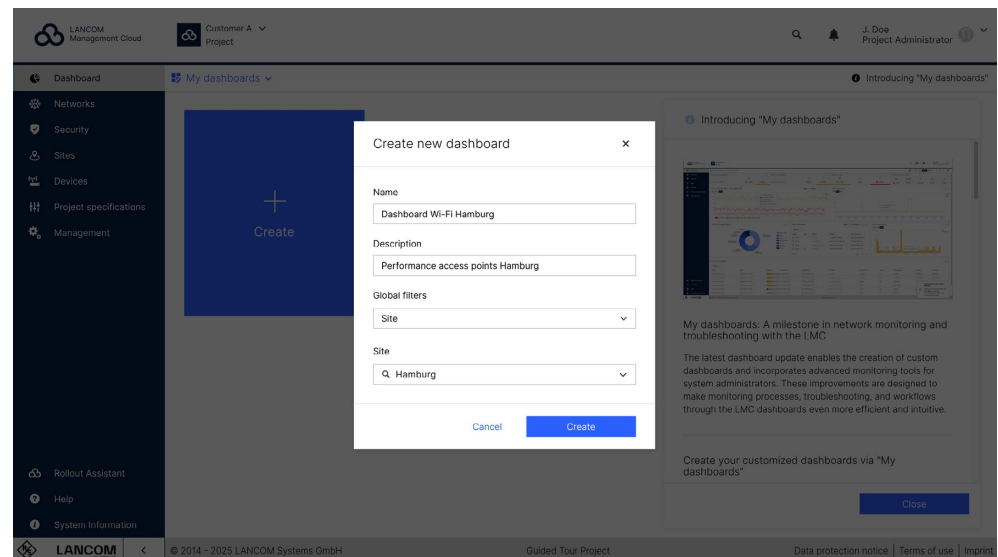


Figure 4:
Configuration dialog of a new dashboard

3. Edit or delete

- Once created, you can edit or delete the dashboard at any time via the "Settings" menu at the top right.

Widget configuration

Add widget

→ Click on the + "Add widget" icon at the top right of your dashboard.

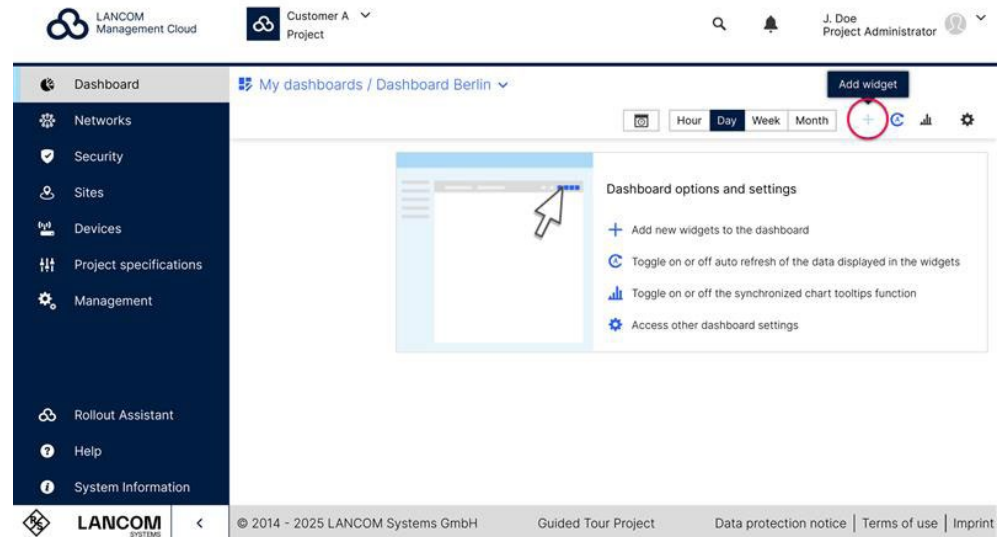


Figure 5:
Add widget

→ Choose from the following options:

- **Name:** Assign a name to the widget, or let it be automatically derived from the selected metric.
- **Metric:** Determine which data the widget should display.
- **Visualization:** Select the appropriate visualization type depending on the selected measured values, e.g. table, tile, or diagram.
- **Global filters:** Select a filter. Leave it set to "inherited" by default if you want the widget to follow the global filters of the dashboard.

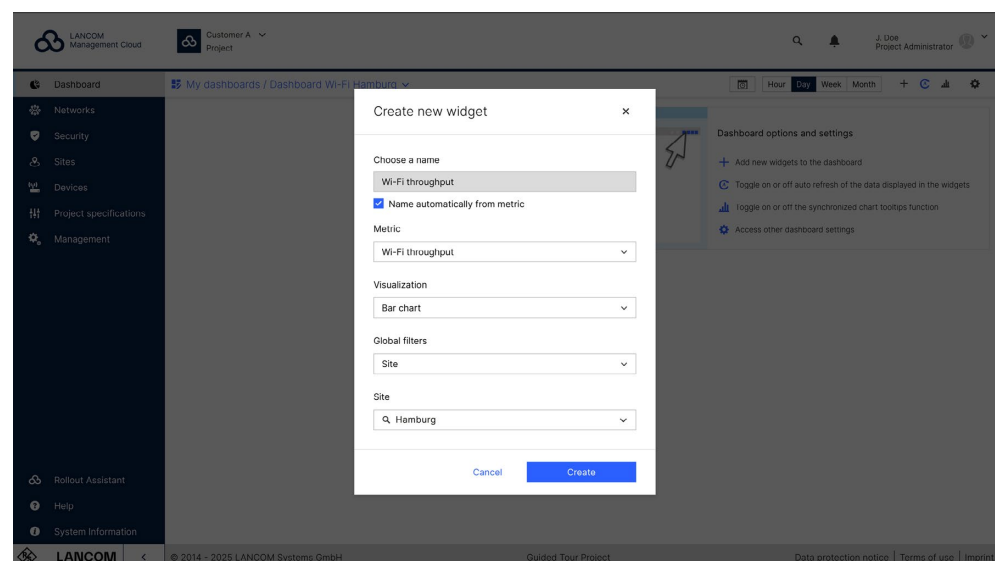


Figure 6:
Configuration dialog of a new
widget

Move or resize the widget

- Click on the settings icon at the top right of your dashboard and select "Resize & move".
- Drag the widget to the desired position.
- Drag the edges or corners of the widget to adjust the size.
- Tip: If you increase the height of a table widget, more rows are displayed.
- Click on the blue "Finish" button in the top right-hand corner to save your changes to the dashboard.

Explore the numerous customization options and design your dashboard according to your needs.

